

Special Report

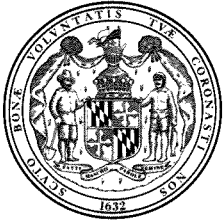
**Crime Scene DNA Collection and Analysis Reporting
By Law Enforcement Agencies**

June 2013



**OFFICE OF LEGISLATIVE AUDITS
DEPARTMENT OF LEGISLATIVE SERVICES
MARYLAND GENERAL ASSEMBLY**

-
- This report is available to the public through the Office of Legislative Audits at 301 West Preston Street, Room 1202, Baltimore, Maryland 21201. The Office may be contacted by telephone at 410-946-5900, 301-970-5900, or 1-877-486-9964.
 - Electronic copies of our reports can be viewed or downloaded from our website at <http://www.ola.state.md.us>.
 - Alternate formats may be requested through the Maryland Relay Service at 1-800-735-2258.
 - The Department of Legislative Services – Office of the Executive Director, 90 State Circle, Annapolis, Maryland 21401 can also assist you in obtaining copies of our reports and related correspondence. The Department may be contacted by telephone at 410-946-5400 or 301-970-5400.
-



DEPARTMENT OF LEGISLATIVE SERVICES
OFFICE OF LEGISLATIVE AUDITS
MARYLAND GENERAL ASSEMBLY

June 25, 2013

Karl S. Aro
Executive Director

Thomas J. Barnickel III, CPA
Legislative Auditor

Senator James C. Rosapepe, Co-Chair, Joint Audit Committee
Delegate Guy J. Guzzone, Co-Chair, Joint Audit Committee
Members of Joint Audit Committee
Annapolis, Maryland

Ladies and Gentlemen:

As required by Section 2-514 of the Public Safety Article of the Annotated Code of Maryland, the Office of Legislative Audits received and compiled reports on statistics for crime scene DNA evidence from local law enforcement agencies (LLEAs) and the Department of State Police (DSP). We also conducted certain evaluations of the information received. Our work to prepare this report did not constitute an audit conducted in accordance with generally accepted government auditing standards.

The law required that each reporting entity submit to the Office of Legislative Audits crime scene DNA collection and analysis data for calendar year 2011, by April 1, 2012. Specifically, each entity was required to report the following data elements: (1) the crimes for which crime scene DNA evidence is routinely collected, (2) the number of cases in which crime scene DNA evidence samples were collected during the reporting year for each type of crime, (3) the average time between crime scene DNA evidence submission and analysis, and (4) the number of cases in which crime scene DNA evidence samples were submitted and not analyzed as of December 31, 2011. In addition, the law required the reporting of the total number of crime scene DNA evidence samples submitted to the Statewide DNA database for calendar year 2011 and the number of crime scene DNA evidence samples related to sexual assaults collected by hospitals during calendar year 2011.

The law required that we compile and evaluate the information reported and submit this summary report. In this regard, we received reports from 135 LLEAs. Of these 135 LLEAs, 58 reported at least one instance during calendar year 2011 of collecting crime scene DNA evidence as defined by State regulations. The remaining 77 LLEAs had no data to report; that is, no crime scene DNA evidence was collected and submitted for analysis by these agencies during calendar year 2011.

Based on our review of the selected LLEA reports and supporting documentation, we found the accuracy and completeness of the data reported improved significantly as compared to our preceding review of calendar year 2009 data, although issues affecting the comparability of the data continued to exist. We performed detailed reviews of six of the largest LLEAs that collectively processed about 85 percent of the

approximately 3,800 calendar year 2011 cases with crime scene DNA evidence samples Statewide. The information reported by five of the six LLEAs generally agreed to supporting documentation, with the exception of one data element for one LLEA. The sixth LLEA tested used an erroneous method to compile the data for reporting purposes and, as a result, we could not determine the accuracy or reliability of any of that LLEA's reported information.

Although the various stakeholders took actions to improve the reliability of reported data, more detailed guidance needs to be provided in certain areas to address the differing methodologies used by the LLEAs in collecting and reporting data. We found, for example, that the methods to account for and report cases when additional crime scene DNA evidence samples were submitted for analysis after the original samples had been analyzed and completed varied among five LLEAs. We also found that there continued to be a lack of any uniform requirements in the tracking methodologies used by the LLEAs to compile and report the requested data. LLEAs currently maintain crime scene DNA evidence data in a manner that they believe is beneficial for their operational needs.

As required by the law, the DSP reported that 1,901 crime scene DNA evidence samples were submitted and qualified for inclusion (that is, met certain State requirements) in the Statewide DNA database in calendar year 2011. We reviewed the basis for this reported amount and found it to be overstated as a result of the inclusion of certain evidence samples collected from suspects that were reported more than once; the extent of the overstatement could not be determined.

The Department of Health and Mental Hygiene (DHMH) reimburses certain hospitals throughout the State for performing forensic examinations related to sexual assaults. As required by DSP regulations that were issued to implement the aforementioned reporting requirements, DHMH provided a report of the number of forensic examinations reimbursed to each county and the City of Baltimore for calendar year 2011. According to this report, DHMH reimbursed these hospitals for 1,369 examinations. We tested the support for these data and found that it was reasonably complete and accurate.

We wish to acknowledge the cooperation extended to us during our review by DSP, DHMH, the LLEAs, and the Governor's Office of Crime Control and Prevention, which assisted in the reporting process.

Respectfully submitted,



Thomas J. Barnickel III, CPA
Legislative Auditor

Table of Contents

Background	5
Scope and Methodology	7
Results and Observations	9
Data Reported by Local Law Enforcement Agencies (LLEAs)	11
Reporting Form Item 1 – Provide the Crime Categories in Which Crime Scene DNA Evidence Items Are Routinely Collected	11
Reporting Form Item 2 – Indicate the Number of Cases in Which Crime Scene DNA Evidence Samples Were Collected in Calendar Year 2011	11
Reporting Form Item 3 – What was the Average Time Between the Date the Agency Submitted Crime Scene DNA Evidence and the Date It Received the DNA Analysis Results Back From the Lab?	13
Reporting Form Item 4 – Identify the Number of Cases in Which Crime Scene DNA Evidence Samples Were Submitted for Analysis for Which a Final Analysis Report Was Not Received as of December 31, 2011, Based on the Month Submitted	15
Factors Contributing to LLEA Reporting Problems	16
Submission of Crime Scene Evidence to the Statewide DNA Database	17
Forensic Examination Collections by Hospitals	18
Exhibit 1 – Responses to Data Item 1 by LLEAs	21
Exhibit 2 – Responses to Data Item 2 by LLEAs	27
Exhibit 3 – Responses to Data Item 3 by LLEAs	34
Exhibit 4 – Responses to Data Item 4 by LLEAs	36
Exhibit 5 – DNA Reporting Form	43
Exhibit 6 – Sexual Assault Forensic Exam Reimbursements	48

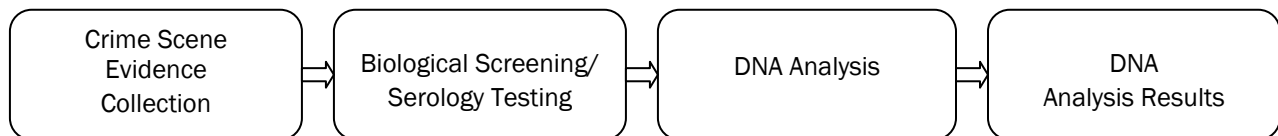
Background

Chapter 337, 2008 Laws of Maryland, effective January 1, 2009, requires local law enforcement agencies (LLEAs) and the Department of State Police (DSP) to report specified information to the Office of Legislative Audits (OLA) about DNA evidence. The law, codified in Section 2-514 of the Public Safety Article of the Annotated Code of Maryland, requires biennial reporting by these agencies of the preceding calendar year's data, starting in 2010 for calendar year 2009 data. The law requires OLA to compile and evaluate the reported data and submit a summary report to the Governor and General Assembly. This report summarizes and evaluates the data reported by the LLEAs for calendar year 2011.

To implement the law's requirements, DSP, based on input from OLA and the Governor's Office of Crime Control and Prevention (GOCCP), issued State regulations to provide certain additional details and guidance to the LLEAs for reporting data and developed a DNA reporting form. As indicated in the regulations, GOCCP coordinated the DNA reporting process and the reported results were submitted to GOCCP and OLA. In addition to specifying the reporting requirements applicable to the LLEAs, the regulations specified additional information to be reported by DSP and the Department of Health and Mental Hygiene to OLA.

Crime Scene DNA Evidence Collection and Analysis Process

The following flowchart and related comments provide a simple overview of the DNA collection and analysis process.



Step 1 – Crime Scene Evidence Collection – Field investigators (such as detectives) obtain crime scene evidence and follow internal procedures for identifying and securing such evidence. At the time of collection, field investigators do not decide which items collected will be used for DNA evidence. Based on our discussions with LLEA personnel, all evidence collected at a crime scene is recorded in an evidence log to document the chain of custody.

Step 2 – Biological Screening /Serology Testing – When a criminal investigator or attorney determines that crime scene evidence needs to be tested for potential DNA matches, the LLEA will submit the potential crime scene DNA evidence to a crime lab for testing,¹ as an initial step to determine if the evidence contains biological materials that will allow for DNA testing. LLEAs require written documentation of the requests for testing as well as reports of the related findings.

Step 3 – DNA Analysis – Based on results from Step 2 above, the LLEA will determine the actual samples to be used by the crime labs for DNA analysis. The LLEA then makes a request for DNA analysis. Labs use different testing methods depending on the amount of DNA material available and the results from biological testing.

Step 4 – DNA Analysis Results – The DNA analysis will result in a DNA profile that allows for matching to an individual (or possibly to a group of individuals). The requestor receives a detailed report of the lab results. This information can then be used by the LLEAs as part of the investigative process.

Multiple DNA Submissions

LLEA personnel may decide to submit crime scene evidence at any time in the investigative process. As a result, there may be multiple submissions related to the same case submitted at different times. For the purposes of this report, the following terms have the meanings indicated:

Original submission is the initial submission of crime scene DNA evidence for subsequent testing and reporting.

Supplemental submission is an additional submission of crime scene DNA evidence prior to the completion of the DNA analysis process for the original submission.

Resubmission is an additional submission of crime scene DNA evidence after the original submission has been tested and the related report issued.

¹This biological screening includes serology testing and other testing, as necessary, to determine if materials are sufficient for DNA testing. Serology testing uses certain chemicals to confirm the existence of bodily fluids, such as saliva, blood, or semen.

Scope and Methodology

We compiled and evaluated the data reported by local law enforcement agencies (LLEAs) on DNA evidence for calendar year 2011. Pursuant to Chapter 337, Laws of Maryland, 2008, LLEAs were required to report data for the following four areas to the Office of Legislative Audits (OLA):

- 1) the crimes for which crime scene DNA evidence is routinely collected
- 2) the number of cases in which crime scene DNA evidence samples were collected during the preceding year for each category of crime
- 3) the average time between crime scene DNA evidence submission and analysis results
- 4) the number of cases in which crime scene DNA evidence samples were submitted and not analyzed at the time of the study

The required reporting also included information on the number of crime scene DNA evidence samples submitted to the Statewide DNA database during calendar year 2011, which was reported by the Department of State Police (DSP). Finally, the law required reporting the number of crime scene evidence samples related to sexual assaults collected by hospitals in each county during calendar year 2011.

Because of the difficulties encountered in verifying the reported data submitted by the LLEAs as outlined in our last special report dated April 20, 2011 (which covered LLEA reporting for calendar year 2009), DSP – with input from OLA, the Governor’s Office of Crime Control and Prevention (GOCCP), and the LLEAs – amended the existing State regulations to give additional guidance to the LLEAs for the information to be reported. These amended State regulations included certain language that attempted to clarify the law’s reporting requirements and increase the accuracy of the reported data. For example, the amended regulations required the reporting of cases where crime scene DNA evidence was collected and submitted instead of requiring the reporting of the number of individual samples. These changes were made in response to the methods used by the LLEAs to record the related data which were generally based on cases rather than specific samples. In addition, the survey document was revised to provide additional guidance to the LLEAs in reporting the required information.

To coordinate the reporting of data by LLEAs, GOCCP developed a DNA reporting form, with input from both OLA and DSP, to be completed by all

LLEAs and returned to GOCCP for subsequent reporting to OLA. The DNA reporting form was designed to capture the data required to be reported, as stated in the aforementioned Maryland law and related regulations. LLEAs submitted their reporting forms manually or online through the GOCCP website. GOCCP then provided all reporting forms to OLA. A copy of the DNA reporting form is included in this report as Exhibit 5.

To ensure that reporting forms were received from all LLEAs in the State, we compared the forms received to a database of LLEA agencies provided by GOCCP and conducted other inquiries to identify potential non-reporting agencies.

To accomplish our task of compiling and evaluating the reported data, we contacted appropriate personnel at the GOCCP, DSP, and Maryland Department of Health and Mental Hygiene (DHMH), as these entities either were responsible for reporting required data or assisted us in obtaining the data.

To assess the accuracy of the data on the reporting forms, we selected the six largest LLEAs to review their processes for compiling and reporting the required data. Based on the data reported, these six LLEAs collectively processed 85 percent of cases with DNA crime scene evidence samples Statewide during calendar year 2011. In addition, we performed testing of the reported data for these LLEAs. The six LLEAs are as follows:

- Anne Arundel County Police Department
- Baltimore City Police Department
- Baltimore County Police Department
- Department of State Police
- Montgomery County Police Department
- Prince George's County Police Department

We also obtained the number of crime scene DNA evidence samples submitted to the Statewide DNA database, which is maintained by DSP. We contacted DSP to obtain supporting documentation and performed tests to assess data accuracy. Similarly, we tested for accuracy the number of hospital forensic examinations related to sexual assaults reported by DHMH for which it reimbursed each county and Baltimore City.

Our work to prepare this report did not constitute an audit conducted in accordance with generally accepted government auditing standards.

Results and Observations

Conclusion

We received reports from 135 local law enforcement agencies (LLEAs). Of the 135 LLEAs, 58 reported at least one instance during calendar year 2011 of cases that included collecting crime scene DNA evidence samples (see Exhibit 2). The remaining 77 LLEAs reported that no crime scene DNA evidence was collected and submitted by these agencies during calendar year 2011.

Based on our review of the reports submitted by the six largest LLEAs and the supporting documentation at the LLEAs, we found that the data accuracy and completeness had significantly improved since our last review. Much of this improvement can be traced to amendments in State regulations governing the reporting process that modified the reporting criteria to be more consistent with the methods used by the LLEAs to collect and record crime scene DNA evidence data. Specifically, we found that the information included on the reporting forms submitted by four of the six LLEAs generally agreed to supporting documentation and was consistent with each LLEA's established methodologies. The information reported by a fifth LLEA also generally agreed to supporting documentation except for its response to one data element for which it was unable to provide any supporting documentation. With respect to the sixth LLEA tested, the information reported for three of the four data elements was largely unreliable due to clerical errors in compiling the data.

Nevertheless, we continued to find inconsistencies among the LLEAs in the methodologies used to record certain data in which detailed guidance was lacking and, as a result, the data reported by the LLEAs may not be comparable. These reporting issues are due, in part, to the need for additional guidance in State law, regulations, and the DNA reporting form regarding additional DNA samples that were submitted for analysis after the initial samples were submitted. A required uniform methodology to guide the LLEAs in compiling and reporting the requested data was also lacking. Specifically, LLEAs currently maintain crime scene DNA evidence data in a manner that supports their ongoing operations without regard to potential Statewide reporting.

As required by the law, the Department of State Police (DSP) reported that it submitted and qualified for inclusion in the Statewide DNA database 1,901 crime scene DNA evidence samples in calendar year 2011. We reviewed the basis for this reported amount and found it to be overstated.

The Department of Health and Mental Hygiene (DHMH) reimburses certain hospitals throughout the State for performing forensic examinations related to sexual assaults. As required by DSP regulations, DHMH provided a report of the number of forensic examinations reimbursed, by county and the City of Baltimore, for calendar year 2011. According to this report, DHMH reimbursed these hospitals for 1,369 examinations. We tested the data and found that the number reported was reasonably complete and accurate.

Data Reported by Local Law Enforcement Agencies (LLEAs)

Reporting Form Item 1 - Check off the corresponding box for each crime category in which DNA crime scene evidence items are routinely collected and submitted to a crime laboratory for biological analysis.

Table 1 Number of LLEAs that Routinely Collect DNA Crime Scene Evidence by Type of Crime								
	Type of Crime							
	Homicide	Child Abuse	Robbery	Assault	Sexual Assault	Burglary	Theft	Other
Number of LLEAs That Routinely Collect Crime Scene DNA Evidence	52	40	54	46	65	54	33	21
Percentage of LLEAs Reporting Collecting Crime Scene DNA Evidence	38.5%	29.6%	40%	34.1%	48.1%	40%	24.4%	15.6%

Note: The number of LLEAs reporting that they routinely collect DNA crime evidence in any of the above categories exceeds the number who reported that they actually collected crime scene DNA evidence (58 LLEAs for calendar year 2011). This is most likely due to LLEAs reporting that they typically would collect such evidence for certain cases but had no such collections for calendar year 2011.

Our review of the data reported by the six LLEAs for Item 1 found that it was generally consistent with the data reported for Reporting Form Item 2. A detailed schedule of the data reported by individual LLEAs is included in Exhibit 1.

Reporting Form Item 2 - Indicate the number of cases in which crime scene DNA evidence samples were collected and submitted to a crime laboratory for biological analysis from January 1, 2011 through December 31, 2011.

Table 2 Number of Cases with Crime Scene DNA Evidence Samples Collected Calendar Year 2011									
Local Law Enforcement Agency	Type of Crime								Total
	Homicide	Child Abuse	Robbery	Assault	Sexual Assault	Burglary	Theft	Other	
Anne Arundel County Police Department	11	13	72	23	47	139	40	57	402
Baltimore City Police Department	156	61	75	149	340	448	4	204	1,437
Baltimore County Police Department	29	7	43	41	30	135	14	30	329
Department of State Police	27	4	22	8	11	46	18	23	159
Montgomery County Police Department	11	0	25	18	34	68	0	52	208
Prince George's County Police Department	97	3	138	65	156	44	7	190	700
Subtotal	331	88	375	304	618	880	83	556	3,235
All Other LLEAs	33	15	67	56	120	214	41	48	594
Totals	364	103	442	360	738	1,094	124	604	3,829

Note: Fifty-eight of the 135 LLEAs reported at least one instance of collecting DNA crime scene evidence during calendar year 2011.

Our review and evaluation of the reported data from the six LLEAs disclosed that the information reported by five of the LLEAs generally agreed to supporting documentation and conformed with each LLEA's methodologies; however, differences existed among these LLEAs in the basis used to report certain of the requested information, affecting comparability of the data. Specifically, State law, regulations, and the reporting form did not provide adequate guidance for how the LLEAs were to count supplemental submissions and resubmissions. Due to the differing methods used by the LLEAs to record these cases in their records, we could not readily determine the number of supplemental submissions and resubmissions. That is, the LLEAs generally did not use a unique identifier to specify whether a case was a supplemental submission or resubmission. Data reliability issues associated with the sixth LLEA were largely due to clerical errors in compiling the data. Specifically, our review disclosed the following conditions:

- There was inconsistency among five of the six LLEAs in the basis for determining the case counts reported. Two LLEAs counted all resubmissions processed in calendar year 2011 as unique cases for reporting the requested data regardless of the year the original submission was made. One of these two LLEAs also counted supplemental submissions as unique cases for reporting purposes while the other did not separately count such submissions. For two other LLEAs, the data reported excluded both supplemental submissions and resubmissions. For the fifth LLEA, the data reported included calendar year 2011 resubmissions related to prior year submissions but excluded resubmissions related to calendar year 2011 cases. This LLEA did not separately count supplemental submissions.
- At the remaining LLEA, the reported data were based on an erroneous report generated by the LLEA. Specifically, as a result of combining two separate reporting logs (that is, the serology and DNA tracking logs), the LLEA erroneously duplicated certain cases related to supplemental cases and resubmissions. This duplication resulted from the logs not containing a unique identifier common to both logs. For example, our review of the case file documentation for one case disclosed that, while the LLEA reported three cases for the reporting form question related to this case, it should have only reported one case. That is, there was only one unique submission for this case received in calendar year 2011. The LLEA was unaware of and could not determine the overall impact of the erroneous reporting method; such a determination would have required a detailed review of each case reported by the LLEA.

A detailed schedule of the reported data by individual LLEAs is included in Exhibit 2.

Reporting Form Item 3 - What was the average time between the date the agency submitted crime scene DNA evidence samples for biological analysis and the date it received the DNA analysis results back from the lab (turnaround time)?

Chart 1 below stratifies the turnaround time, by range of days, for DNA crime scene evidence analysis for the 53 LLEAs that provided a specific response. Only 53 of the 58 LLEAs that reported at least one instance of collecting DNA crime scene evidence during calendar year 2011 responded to this question; the remaining five LLEAs did not report a turnaround time. For two of these five LLEAs, the DNA analyses were not completed in calendar year 2011 and the cases were reported in Reporting Form Item 4. The remaining three LLEAs simply did not answer the question.

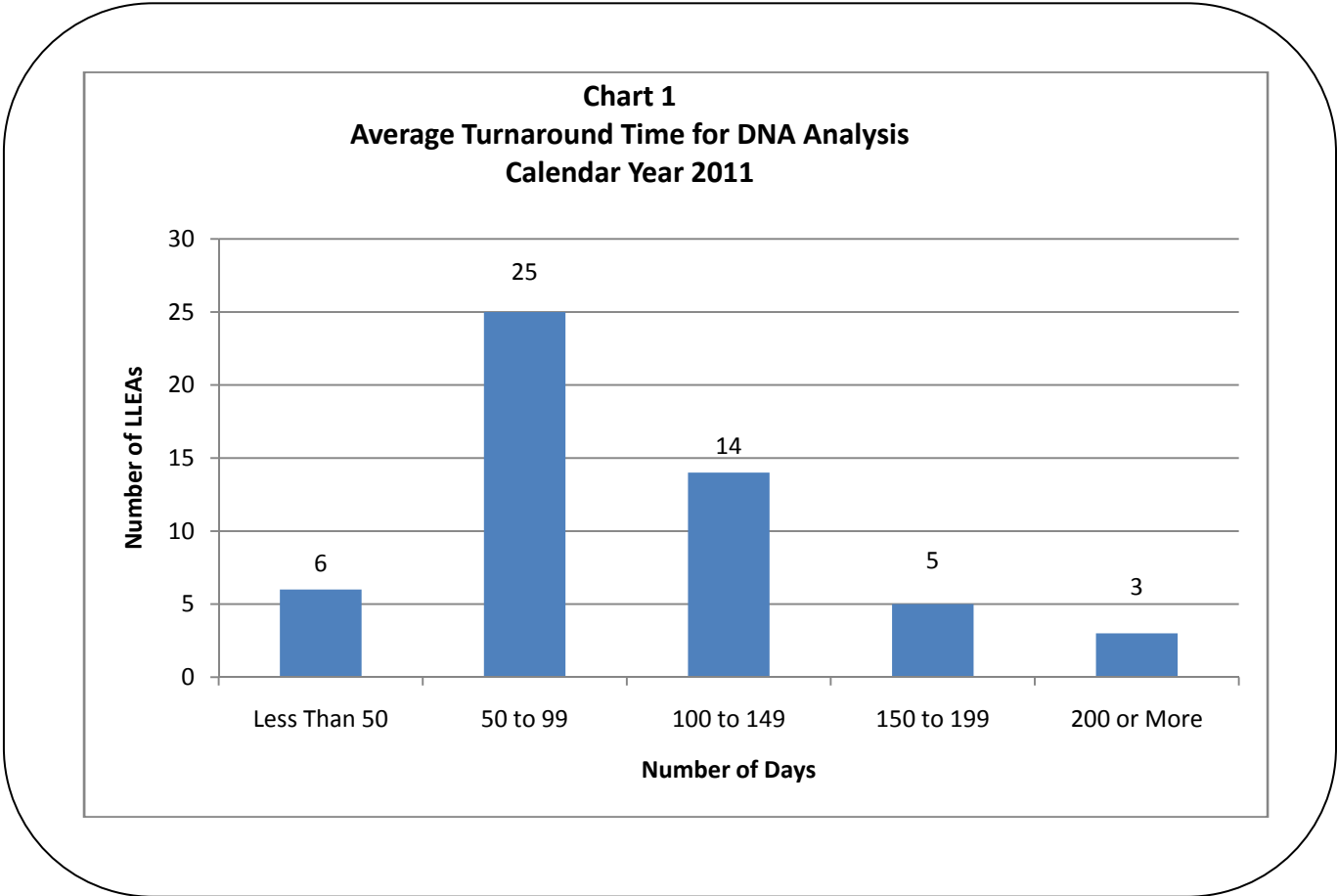


Table 3 Average Turnaround Time for Crime Scene DNA Evidence Analysis Calendar Year 2011	
Local Law Enforcement Agency	Average Time (in Days)
Anne Arundel County Police Department	136
Baltimore City Police Department	307
Baltimore County Police Department	164
Department of State Police	128
Montgomery County Police Department	98
Prince George's County Police Department	542
All Other LLEAs Reporting	95
Average - All LLEAs Reporting	110

Notes:

- 1) Although the law, which is the basis for reporting form item 3, refers to the “average time between crime scene DNA collection and analysis,” the reporting form clarifies that DNA “collection” refers to when the DNA evidence is submitted to the crime lab.
- 2) Only 53 of the 58 LLEAs that reported at least one instance of collecting DNA crime scene evidence during calendar year 2011 provided a specific figure in response to this item. The specific data reported by these 53 LLEAs are included in Exhibit 3.

Our review and evaluation of the reported data from the six largest LLEAs disclosed that the information reported by five of the LLEAs generally agreed to supporting documentation and conformed with each LLEA’s methodologies; however, differences among these five LLEAs in the methodology used to report certain information affected comparability of the data. These differences generally related to the methods used to account for resubmission cases and were caused by insufficient guidance for recording and reporting these types of cases. It should be noted that we found instances in which the LLEAs did not account for supplemental submissions and resubmissions for Reporting Form Items 3 and 4 in the same manner as they did for Reporting Form 2; accordingly, we evaluated the reliability of each reporting item independently. Data reliability issues associated with the sixth LLEA were largely due to clerical errors in compiling the data. Specifically, our review disclosed the following conditions:

- Four LLEAs evaluated resubmissions as unique cases and calculated the turnaround time based on the date of resubmission. One other LLEA used the earliest date associated with the DNA original submission when determining the turnaround time for resubmissions; this could result in significantly overstated turnaround times for cases where the original submissions were made in prior years. All five of these LLEAs did not

count supplemental submissions as unique cases and used the earliest date associated with the original DNA submission to calculate the turnaround time.

- As noted for Report Form Item 2, the remaining LLEA erroneously combined its two tracking logs resulting in a duplication of reported data. For example, in the case we reviewed and commented upon under Report Form Item 2, this LLEA reported a turnaround time of 254 days while, based on the case file documentation, we calculated a turnaround time of 202 days. These differences were due to the improper matching of the entries recorded on the two logs, which did not have unique identifiers. The LLEA could not readily determine the overall impact of this error, which would require a detailed review of each case reported.

A detailed schedule of the data reported by the 53 LLEAs that responded to Reporting Form Item 3 is included in Exhibit 3.

Reporting Form Item 4 – Identify the number of cases in which crime scene DNA evidence samples were submitted for biological analysis prior to and including 2011, by month of submission, for which a final DNA analysis report had not been received from the lab as of December 31, 2011.

**Table 4
Number of Cases with Crime Scene DNA Evidence Samples Submitted for Analysis Not Yet Completed
As of December 31, 2011**

Local Law Enforcement Agency	Month Sample Submitted													Total
	Prior to Jan	Jan	Feb	Mar	Apr	May	June	July	Aug	Sep	Oct	Nov	Dec	
Anne Arundel County Police Department	14	1	2	4	3	14	20	28	27	33	35	21	32	234
Baltimore City Police Department	297	65	41	67	220	227	49	51	59	66	59	67	81	1,349
Baltimore County Police Department	19	4	1	7	10	14	9	28	17	21	19	18	12	179
Department of State Police	2	1	2	2	2	5	1	6	4	7	11	6	17	66
Montgomery County Police Department	0	1	0	1	0	0	1	3	1	3	6	14	25	55
Prince George's County Police Department	561	61	33	63	42	48	70	71	73	81	56	40	45	1,244
Subtotal	893	133	79	144	277	308	150	187	181	211	186	166	212	3,127
All Other LLEAs	26	1	1	3	3	4	3	10	10	10	9	6	26	112
Total	919	134	80	147	280	312	153	197	191	221	195	172	238	3,239

Our review disclosed that the data reported by four LLEAs generally agreed with supporting documentation and conformed to each LLEA's methodologies for data collection and reporting. However, the data reported by one LLEA could not be agreed to supporting documentation and the data reported by the sixth LLEA were unreliable, largely due to clerical errors in compiling the data. Specifically, we noted the following conditions:

- For four of the six LLEAs reviewed, the data reported that we tested were reasonably complete and accurate and supported by case file documentation. Each of these LLEAs counted resubmissions as unique cases when determining the number of cases not processed at December 31, 2011. Similar to Reporting Form Item 3, these four LLEAs did not count supplemental submissions as unique cases.
- One LLEA was unable to provide any documentation to support how it determined the number of cases not processed as of December 31, 2011. We were advised that the number of cases was based on a manual count of cases submitted where the serology process had not begun as of year-end. Accordingly, we could not determine the accuracy of the reported data.
- As already commented upon in Reporting Form Items 2 and 3, one LLEA erroneously duplicated entries when it combined its two tracking logs in determining the responses to Reporting Form Item 3. For example, for the cases tested, we found that the LLEA reported 11 cases in response to this Item. However, according to case file documentation, the LLEA should have only reported 8 cases (an overstatement of 3 cases). The LLEA could not readily determine the overall impact of the duplication as this would require a detailed review of all of the cases reported.

A detailed schedule of the reported data by individual LLEAs is included in Exhibit 4.

Factors Contributing to LLEA Reporting Problems

Our review disclosed certain differences among the LLEAs in the basis used to determine and report the requested cases with crime scene DNA evidence data. Some problems observed during the review were attributable to LLEA clerical errors. Data reporting and reliability issues were also the result of insufficient guidance and the lack of a uniform methodology to collect and report certain data. Critical definitions and methodologies were not adequately explained in the State law, regulations, and the DNA reporting form.

- The law, regulations, and DNA Reporting Form did not include complete definitions for critical terms such as “supplemental” DNA submissions and “resubmissions.” The law, regulations, and DNA reporting form did not specify a defined methodology for how the LLEAs should record and report cases with DNA supplemental submissions and resubmissions. Specifically, each LLEA determined its own criteria for recording these requests for additional biological analyses and did not always apply these criteria consistently in response to all items on the Reporting Form.

- State law and regulations did not mandate a uniform methodology for compiling and reporting cases with crime scene DNA evidence samples and did not stipulate the required data elements that each LLEA must maintain. As a result, each of the LLEAs we visited used unique methods for tracking DNA samples that supported its individual operations. In most cases, the existing tracking methodologies could not provide the data required on the DNA Reporting Form without additional effort on the part of LLEA staff. Not all LLEAs maintained a single tracking methodology that followed cases with crime scene DNA evidence from the initial point of collection at a crime scene through all of the subsequent stages of the process. As previously noted, for one LLEA tested, this failure to adopt a single tracking identifier had a significant impact on the information reported.

Submission of Crime Scene Evidence to the Statewide DNA Database

Pursuant to Chapter 337, Laws of Maryland, 2008, the Department of State Police (DSP) reported the total number of crime scene DNA evidence samples submitted to the Statewide DNA database (Database) in calendar year 2011. Based on the related State regulations, DSP administers the Database and must ensure that DNA samples meet certain State requirements prior to inclusion in the Database. Accordingly, DSP reported that 1,901 crime scene DNA evidence samples were submitted and qualified for inclusion during calendar year 2011. Based on DSP representations, as explained below, it appears the total reported was overstated, the extent to which could not be determined.

Of the total reported, 927 included DSP crime scene DNA evidence samples and samples processed by LLEA labs that were added to local databases and subsequently uploaded to the Database. We reviewed the basis for the reported figure and supporting documentation and found it to be reasonably accurate.

The remaining 974 evidence samples represent samples collected from suspects, by DSP and the local LLEAs, and submitted to the Database. These samples were reported for the first time in calendar year 2011 because of a change in the State regulations since our last report that requires that crime scene DNA evidence samples include suspect samples. Based on our review, we were unable to determine the accuracy of the number of suspect samples. Specifically, although DSP provided us a listing of these samples, an undetermined number of the 974 samples added to the Database represented a reentry of a previously submitted evidence sample. According to DSP, these samples were reentered to eliminate certain previously recorded demographic data related to the original evidence samples; DSP advised us that it was informed by federal officials that the Database should not contain certain demographic data. We were unable to determine the number of reentered suspect samples as DSP could not provide a report or audit trail of these corrections.

Forensic Examination Collections by Hospitals

Pursuant to Chapter 337, Laws of Maryland, 2008, DSP and the LLEAs are required to report the number of crime scene DNA evidence samples related to sexual assault evidence collected by hospitals in calendar year 2011. The regulations clarified the law by placing the reporting requirement on the Department of Health and Mental Hygiene (DHMH) and by requiring DHMH to report the number of hospital forensic examinations for which it reimbursed each jurisdiction in calendar year 2011. Certain hospitals throughout the State are authorized by DHMH to perform forensic examinations on sexual assault victims. When a hospital performs these examinations, it may request and receive reimbursement from DHMH for the costs associated with the examinations. Based on records provided by DHMH, DHMH reimbursed hospitals in each county and Baltimore City for sexual assault forensic examinations as detailed in Table 5 on the following page.

As part of our review, we tested the data provided by DHMH for completeness (that is, to ensure the data reflected reimbursements for calendar year 2011) and accuracy (that is, to ensure the data agreed to properly approved and processed reimbursement requests). Based on our tests, we determined that the data provided by DHMH were reasonably complete and accurate.

**Table 5
Sexual Assault Forensic Examinations Reimbursed
Calendar Year 2011**

Hospital Location	Forensic Reimbursements
Allegany	32
Anne Arundel	107
Baltimore City	439
Baltimore County	154
Calvert	8
Caroline	0
Carroll	26
Cecil	23
Charles	30
Dorchester	2
Frederick	56
Garrett	3
Harford	13
Howard	65
Kent	0
Montgomery	92
Prince George's	150
Queen Anne's	0
St. Mary's	13
Somerset	0
Talbot	39
Washington	37
Wicomico	53
Worcester	27
Total	1,369

Source: Department of Health and Mental Hygiene

Note: This table is based on the location of the hospital that performed and was reimbursed for the forensic examination. Not all subdivisions have a hospital that performs forensic examinations. Sexual assault forensic examination information by subdivision where the assault occurred and by hospital name is included in Exhibit 6.

In compiling the above data, DHMH reported reimbursements based on the date forensic examinations were approved for reimbursement and not the date forensic examinations were performed. Also, each forensic examination relates to one patient.

Exhibit 1 – Responses to Data Item 1 by LLEAs

Types of Cases for Which Crime Scene Evidence Was Routinely Collected by LLEA

	Law Enforcement Agency	Type of Crime							
		Homicide	Child Abuse	Robbery	Assault	Sexual Assault	Burglary	Theft	Other
1	Aberdeen Police Department	•		•	•	•	•		•
2	Allegany County Sheriff's Office	•	•	•	•	•	•	•	
3	Anne Arundel County Police Department Crime Laboratory	•	•	•	•	•	•	•	•
4	Anne Arundel County Sheriff's Office								
5	Baltimore City Community College Department of Public Safety								
6	Baltimore City Housing Authority Police								
7	Baltimore City Police Department	•	•	•	•	•	•	•	•
8	Baltimore City School Police Force								
9	Baltimore City Sheriff's Office								
10	Baltimore County Police Department	•	•	•	•	•	•	•	•
11	Baltimore County Sheriff's Office								
12	Bel Air Police Department	•		•	•	•		•	
13	Berlin Police Department								
14	Berwyn Heights Police Department								
15	Bladensburg Police Department								
16	Boonsboro Police Department								
17	Bowie State University Police Department								
18	Brunswick Police Department								
19	Calvert County Sheriff's Office	•		•	•	•	•		
20	Cambridge Police Department	•	•	•	•	•	•	•	•
21	Capitol Heights Police Department								•
22	Caroline County Sheriff's Office	•		•	•	•	•		
23	Carroll County Sheriff's Office	•	•	•	•	•	•	•	
24	Cecil County Sheriff's Office	•	•	•	•	•	•	•	

Exhibit 1 – Responses to Data Item 1 by LLEAs

Types of Cases for Which Crime Scene Evidence Was Routinely Collected by LLEA									
	Law Enforcement Agency	Type of Crime							
		Homicide	Child Abuse	Robbery	Assault	Sexual Assault	Burglary	Theft	Other
25	Centreville Police Department	•	•	•	•	•	•	•	
26	Charles County Sheriff's Office	•	•	•	•	•	•		
27	Chestertown Police Department	•	•	•		•			
28	Cheverly Police Department								
29	Chevy Chase Village Police Department	•	•	•	•	•	•	•	
30	City of Annapolis Police Department	•	•	•	•	•	•	•	
31	City of Bowie Police Department								
32	City of Havre de Grace Police Department				•	•			
33	City of Salisbury Police Department	•				•	•		
34	City of Takoma Park Police Department	•	•	•	•	•	•	•	
35	Colmar Manor Police Department								
36	Coppin State University Department of Public Safety								
37	Cottage City Police Department								
38	Crisfield Police Department	•	•			•	•		
39	Crofton Police Department								
40	Cumberland Police Department					•	•	•	
41	Delmar Police Department					•			
42	Denton Police Department					•			
43	Department of General Services / Maryland Capitol Police								
44	Department of State Police (Forensic Science Division)	•	•	•	•	•	•	•	•
45	District Heights Police Department								
46	Dorchester County Sheriff's Office	•		•		•	•		
47	Easton Police Department	•		•	•	•	•		
48	Edmonston Police Department								
49	Elkton Police Department	•		•	•	•	•		

Exhibit 1 – Responses to Data Item 1 by LLEAs

Types of Cases for Which Crime Scene Evidence Was Routinely Collected by LLEA									
	Law Enforcement Agency	Type of Crime							
		Homicide	Child Abuse	Robbery	Assault	Sexual Assault	Burglary	Theft	Other
50	Fairmount Heights Police Department								
51	Federalsburg Police Department	•	•	•		•			
52	Forest Heights Police Department								
53	Frederick County Sheriff's Office	•	•	•	•	•	•		
54	Frederick Police Department	•	•	•	•	•	•	•	
55	Frostburg Police Department								•
56	Frostburg State University Police Department								
57	Fruitland Police Department	•		•		•	•		
58	Gaithersburg Police Department			•		•	•		
59	Garrett County Sheriff's Office	•		•		•			
60	Gibson Island Police Department								
61	Glenarden Police Department								
62	Greenbelt Police Department	•	•	•	•	•	•		
63	Greensboro Police Department		•			•	•		
64	Hagerstown Community College Police Department								
65	Hagerstown Police Department	•	•	•	•	•	•	•	•
66	Hampstead Police Department								
67	Hancock Police Department	•	•	•	•	•	•	•	
68	Harford County Sheriff's Office	•	•	•	•	•	•	•	•
69	Howard County Police Department	•	•	•	•	•	•	•	•
70	Howard County Sheriff's Office								
71	Hurlock Police Department	•	•	•		•	•		
72	Hyattsville City Police Department			•		•	•		
73	Kent County Sheriff's Office	•	•	•	•	•	•	•	

Exhibit 1 – Responses to Data Item 1 by LLEAs

Types of Cases for Which Crime Scene Evidence Was Routinely Collected by LLEA									
	Law Enforcement Agency	Type of Crime							
		Homicide	Child Abuse	Robbery	Assault	Sexual Assault	Burglary	Theft	Other
74	La Plata Police Department								
75	Landover Hills Police Department								
76	Laurel Police Department	•	•		•	•	•	•	
77	Lonaconing Police Department								
78	Luke Police Department								
79	Manchester Police Department								
80	Maryland Natural Resources Police								
81	Maryland Park Police Montgomery County Division					•			
82	Maryland Transportation Authority Police				•	•		•	•
83	Maryland-National Capital Park Police Prince George's Division					•	•		
84	Maryland Department of Public Safety and Correctional Services - Internal Investigative Unit	•				•			
85	Montgomery County Police Department	•	•	•	•	•	•	•	•
86	Montgomery County Sheriff's Office								
87	Morgan State University Department of Police and Public Safety								
88	Mount Rainier Police Department								
89	New Carrollton Police Department								
90	North East Police Department								
91	Oakland Police Department				•	•			
92	Ocean City Police Department			•	•	•	•	•	•
93	Ocean Pines Police Department		•			•			
94	Office of the Queen Anne's County Sheriff	•	•	•	•	•	•	•	
95	Oxford Police Department	•	•	•	•	•	•	•	
96	Perryville Police Department								

Exhibit 1 – Responses to Data Item 1 by LLEAs

Types of Cases for Which Crime Scene Evidence Was Routinely Collected by LLEA									
	Law Enforcement Agency	Type of Crime							
		Homicide	Child Abuse	Robbery	Assault	Sexual Assault	Burglary	Theft	Other
97	Pocomoke City Police Department								
98	Port Deposit Police Department								
99	Prince George's Community College Campus Police								
100	Prince George's County Police Department	•	•	•	•	•	•	•	•
101	Prince George's Sheriff's Office								
102	Princess Anne Police Department	•	•	•	•	•	•		•
103	Ridgely Police Department								
104	Rising Sun Police Department	•	•	•	•	•	•	•	
105	Riverdale Park Police Department	•	•	•	•	•	•		
106	Rock Hall Police Department								
107	Rockville City Police Department								•
108	Salisbury University Police Department								
109	Seat Pleasant Police Department								
110	Smithsburg Police Department								•
111	Snow Hill Police Department								
112	Somerset County Sheriff's Office	•		•		•	•	•	
113	Spring Grove Hospital Center Police Department								
114	St. Mary's County Sheriff's Office	•	•	•	•	•	•		
115	St. Michaels Police Department			•		•	•		
116	Sykesville Police Department								
117	Talbot County Sheriff's Office	•		•		•			
118	Taneytown Police Department								
119	Thurmont Police Department	•	•	•	•	•	•		
120	Town of Morningside Police Department								
121	Towson University Police			•	•		•	•	

Exhibit 1 – Responses to Data Item 1 by LLEAs

Types of Cases for Which Crime Scene Evidence Was Routinely Collected by LLEA									
	Law Enforcement Agency	Type of Crime							
		Homicide	Child Abuse	Robbery	Assault	Sexual Assault	Burglary	Theft	Other
122	Trappe Police Department								
123	University of Baltimore Police Department								
124	University of Maryland Baltimore County Police								•
125	University of Maryland Baltimore Police Force								
126	University of Maryland Eastern Shore Police Department	•	•	•	•	•			
127	University of Maryland Police					•	•		
128	University Park Police Department								
129	Upper Marlboro Police Department								
130	Washington County Sheriff's Office	•		•			•		
131	Washington Suburban Sanitary Commission Police Department								
132	Westminster Police Department			•	•		•	•	•
133	Wicomico County Sheriff's Office	•	•	•	•			•	•
134	Worcester County Bureau of Investigation								
135	Worcester County Sheriff's Office / Worcester County Bureau of Investigation	•	•	•	•	•	•	•	
	Total	52	40	54	46	65	54	33	21

Note: A “•” denotes that the LLEA reported that it routinely collected crime scene DNA evidence for the type of case indicated.

Exhibit 2 – Responses to Data Item 2 by LLEAs

Number of Cases With Crime Scene DNA Evidence Collected by LLEA, For Calendar Year 2011										
	Law Enforcement Agency	Type of Crime								Total
		Homicide	Child Abuse	Robbery	Assault	Sexual Assault	Burglary	Theft	Other	
1	Aberdeen Police Department	2	0	2	1	2	8	0	1	16
2	Allegany County Sheriff's Office	0	0	0	1	0	4	0	0	5
3	Anne Arundel County Police Department Crime Laboratory	11	13	72	23	47	139	40	57	402
4	Anne Arundel County Sheriff's Office	0	0	0	0	0	0	0	0	0
5	Baltimore City Community College Department of Public Safety	0	0	0	0	0	0	0	0	0
6	Baltimore City Housing Authority Police	0	0	0	0	0	0	0	0	0
7	Baltimore City Police Department	156	61	75	149	340	448	4	204	1,437
8	Baltimore City School Police Force	0	0	0	0	0	0	0	0	0
9	Baltimore City Sheriff's Office	0	0	0	0	0	0	0	0	0
10	Baltimore County Police Department	29	7	43	41	30	135	14	30	329
11	Baltimore County Sheriff's Office	0	0	0	0	0	0	0	0	0
12	Bel Air Police Department	0	0	0	2	0	0	0	0	2
13	Berlin Police Department	0	0	0	0	0	0	0	0	0
14	Berwyn Heights Police Department	0	0	0	0	0	0	0	0	0
15	Bladensburg Police Department	0	0	0	0	0	0	0	0	0
16	Boonsboro Police Department	0	0	0	0	0	0	0	0	0
17	Bowie State University Police Department	0	0	0	0	0	0	0	0	0
18	Brunswick Police Department	0	0	0	0	0	0	0	0	0
19	Calvert County Sheriff's Office	0	0	0	5	4	2	0	0	11
20	Cambridge Police Department	0	1	1	0	5	3	0	0	10
21	Capitol Heights Police Department	0	0	0	0	0	0	0	0	0
22	Caroline County Sheriff's Office	1	0	0	0	0	1	0	0	2
23	Carroll County Sheriff's Office	1	0	0	0	4	4	1	0	10

Exhibit 2 – Responses to Data Item 2 by LLEAs

Number of Cases With Crime Scene DNA Evidence Collected by LLEA, For Calendar Year 2011										
	Law Enforcement Agency	Type of Crime								Total
		Homicide	Child Abuse	Robbery	Assault	Sexual Assault	Burglary	Theft	Other	
24	Cecil County Sheriff's Office	1	0	0	1	1	2	0	0	5
25	Centreville Police Department	0	0	1	0	0	0	0	0	1
26	Charles County Sheriff's Office	1	0	5	4	7	38	11	6	72
27	Chestertown Police Department	0	1	2	0	5	0	0	0	8
28	Cheverly Police Department	0	0	0	0	0	0	0	0	0
29	Chevy Chase Village Police Department	0	0	0	0	0	0	0	0	0
30	City of Annapolis Police Department	5	0	1	3	3	5	1	1	19
31	City of Bowie Police Department	0	0	0	0	0	0	0	0	0
32	City of Havre de Grace Police Department	0	0	0	2	0	0	0	0	2
33	City of Salisbury Police Department	0	0	1	0	5	4	0	0	10
34	City of Takoma Park Police Department	0	0	0	0	0	3	0	0	3
35	Colmar Manor Police Department	0	0	0	0	0	0	0	0	0
36	Coppin State University Department of Public Safety	0	0	0	0	0	0	0	0	0
37	Cottage City Police Department	0	0	0	0	0	0	0	0	0
38	Crisfield Police Department	0	0	0	0	1	1	0	0	2
39	Crofton Police Department	0	0	0	0	0	0	0	0	0
40	Cumberland Police Department	0	0	2	0	5	6	4	0	17
41	Delmar Police Department	0	0	0	0	0	0	0	0	0
42	Denton Police Department	0	0	0	0	0	0	0	1	1
43	Department of General Services / Maryland Capitol Police	0	0	0	0	0	0	0	0	0
44	Department of State Police (Forensic Science Division)	27	4	22	8	11	46	18	23	159
45	District Heights Police Department	0	0	0	0	0	0	0	0	0

Exhibit 2 – Responses to Data Item 2 by LLEAs

Number of Cases With Crime Scene DNA Evidence Collected by LLEA, For Calendar Year 2011										
	Law Enforcement Agency	Type of Crime								Total
		Homicide	Child Abuse	Robbery	Assault	Sexual Assault	Burglary	Theft	Other	
46	Dorchester County Sheriff's Office	1	0	1	0	0	2	0	0	4
47	Easton Police Department	0	0	1	1	0	2	0	0	4
48	Edmonston Police Department	0	0	0	0	0	0	0	0	0
49	Elkton Police Department	2	0	4	2	5	5	0	0	18
50	Fairmount Heights Police Department	0	0	0	0	0	0	0	0	0
51	Federalsburg Police Department	0	0	0	0	0	0	0	0	0
52	Forest Heights Police Department	0	0	0	0	0	0	0	0	0
53	Frederick County Sheriff's Office	1	0	1	3	3	8	0	0	16
54	Frederick Police Department	2	0	2	1	6	5	0	6	22
55	Frostburg Police Department	1	0	0	0	3	0	0	1	5
56	Frostburg State University Police Department	0	0	0	0	0	0	0	0	0
57	Fruitland Police Department	0	0	2	0	0	3	1	0	6
58	Gaithersburg Police Department	0	0	0	0	0	2	0	0	2
59	Garrett County Sheriff's Office	2	0	0	0	0	0	0	2	4
60	Gibson Island Police Department	0	0	0	0	0	0	0	0	0
61	Glenarden Police Department	0	0	0	0	0	0	0	0	0
62	Greenbelt Police Department	0	0	0	0	0	0	0	0	0
63	Greensboro Police Department	0	0	0	0	0	0	0	0	0
64	Hagerstown Community College Police Department	0	0	0	0	0	0	0	0	0
65	Hagerstown Police Department	0	1	4	4	5	7	2	2	25
66	Hampstead Police Department	0	0	0	0	0	0	0	0	0
67	Hancock Police Department	0	1	0	0	1	0	0	0	2
68	Harford County Sheriff's Office	3	3	4	2	7	13	2	2	36

Exhibit 2 – Responses to Data Item 2 by LLEAs

Number of Cases With Crime Scene DNA Evidence Collected by LLEA, For Calendar Year 2011										
	Law Enforcement Agency	Type of Crime								Total
		Homicide	Child Abuse	Robbery	Assault	Sexual Assault	Burglary	Theft	Other	
69	Howard County Police Department	4	0	15	8	4	38	1	7	77
70	Howard County Sheriff's Office	0	0	0	0	0	0	0	0	0
71	Hurlock Police Department	0	1	0	2	3	2	0	0	8
72	Hyattsville City Police Department	0	0	1	2	0	0	0	0	3
73	Kent County Sheriff's Office	0	0	0	0	0	0	0	0	0
74	La Plata Police Department	0	0	0	0	0	0	0	0	0
75	Landover Hills Police Department	0	0	0	0	0	0	0	0	0
76	Laurel Police Department	0	0	3	0	0	0	0	0	3
77	Lonaconing Police Department	0	0	0	0	0	0	0	0	0
78	Luke Police Department	0	0	0	0	0	0	0	0	0
79	Manchester Police Department	0	0	0	0	0	0	0	0	0
80	Maryland Natural Resources Police	0	0	0	0	0	0	0	0	0
81	Maryland Park Police Montgomery County Division	0	0	0	0	0	0	0	0	0
82	Maryland Transportation Authority Police	0	0	0	0	0	0	0	2	2
83	Maryland-National Capital Park Police Prince George's Division	0	0	0	0	3	3	0	0	6
84	Maryland Department of Public Safety and Correctional Services - Internal Investigative Unit	0	0	0	0	0	0	0	0	0
85	Montgomery County Police Department	11	0	25	18	34	68	0	52	208
86	Montgomery County Sheriff's Office	0	0	0	0	0	0	0	0	0
87	Morgan State University Department of Police and Public Safety	0	0	0	0	0	0	0	0	0
88	Mount Rainier Police Department	0	0	0	0	0	0	0	0	0
89	New Carrollton Police Department	0	0	0	0	0	0	0	0	0

Exhibit 2 – Responses to Data Item 2 by LLEAs

Number of Cases With Crime Scene DNA Evidence Collected by LLEA, For Calendar Year 2011										
	Law Enforcement Agency	Type of Crime								Total
		Homicide	Child Abuse	Robbery	Assault	Sexual Assault	Burglary	Theft	Other	
90	North East Police Department	0	0	0	0	0	0	0	0	0
91	Oakland Police Department	0	0	0	0	0	0	0	0	0
92	Ocean City Police Department	0	0	3	0	7	5	4	5	24
93	Ocean Pines Police Department	0	2	0	0	2	0	0	0	4
94	Office of the Queen Anne's County Sheriff	3	1	1	0	0	6	3	4	18
95	Oxford Police Department	0	0	0	0	0	0	0	0	0
96	Perryville Police Department	0	0	0	0	0	0	0	0	0
97	Pocomoke City Police Department	0	0	0	0	0	0	0	0	0
98	Port Deposit Police Department	0	0	0	0	0	0	0	0	0
99	Prince George's Community College Campus Police	0	0	0	0	0	0	0	0	0
100	Prince George's County Police Department	97	3	138	65	156	44	7	190	700
101	Prince George's Sheriff's Office	0	0	0	0	0	0	0	0	0
102	Princess Anne Police Department	1	0	1	2	0	2	0	1	7
103	Ridgely Police Department	0	0	0	0	0	0	0	0	0
104	Rising Sun Police Department	0	0	0	0	0	2	0	0	2
105	Riverdale Park Police Department	0	0	0	0	2	0	0	0	2
106	Rock Hall Police Department	0	0	0	0	0	0	0	0	0
107	Rockville City Police Department	0	0	0	0	0	0	0	0	0
108	Salisbury University Police Department	0	0	0	0	0	0	0	0	0
109	Seat Pleasant Police Department	0	0	0	0	0	0	0	0	0
110	Smithsburg Police Department	0	0	0	0	0	0	0	0	0
111	Snow Hill Police Department	0	0	0	0	0	0	0	0	0
112	Somerset County Sheriff's Office	0	0	0	1	1	2	2	0	6

Exhibit 2 – Responses to Data Item 2 by LLEAs

Number of Cases With Crime Scene DNA Evidence Collected by LLEA, For Calendar Year 2011										
	Law Enforcement Agency	Type of Crime								Total
		Homicide	Child Abuse	Robbery	Assault	Sexual Assault	Burglary	Theft	Other	
113	Spring Grove Hospital Center Police Department	0	0	0	0	0	0	0	0	0
114	St. Mary's County Sheriff's Office	1	1	2	0	3	5	0	0	12
115	St. Michaels Police Department	0	0	0	0	1	1	0	0	2
116	Sykesville Police Department	0	0	0	0	0	0	0	0	0
117	Talbot County Sheriff's Office	0	0	0	0	0	0	0	1	1
118	Taneytown Police Department	0	0	0	0	0	0	0	0	0
119	Thurmont Police Department	0	0	1	0	1	1	0	1	4
120	Town of Morningside Police Department	0	0	0	0	0	0	0	0	0
121	Towson University Police	0	0	0	0	0	0	0	0	0
122	Trappe Police Department	0	0	0	0	0	0	0	0	0
123	University of Baltimore Police Department	0	0	0	0	0	0	0	0	0
124	University of Maryland Baltimore County Police	0	0	0	0	0	0	0	0	0
125	University of Maryland Baltimore Police Force	0	0	0	0	0	0	0	0	0
126	University of Maryland Eastern Shore Police Department	0	0	0	0	0	0	0	0	0
127	University of Maryland Police	0	0	0	0	1	0	0	0	1
128	University Park Police Department	0	0	0	0	0	0	0	0	0
129	Upper Marlboro Police Department	0	0	0	0	0	0	0	0	0
130	Washington County Sheriff's Office	0	0	1	1	1	1	1		5
131	Washington Suburban Sanitary Commission Police Department	0	0	0	0	0	0	0	0	0
132	Westminster Police Department	0	0	1	0	0	3	1	1	6
133	Wicomico County Sheriff's Office	0	0	3	3	3	7	2	2	20
134	Worcester County Bureau of Investigation	0	0	0	0	0	0	0	0	0

Exhibit 2 – Responses to Data Item 2 by LLEAs

Number of Cases With Crime Scene DNA Evidence Collected by LLEA, For Calendar Year 2011										
	Law Enforcement Agency	Type of Crime								Total
		Homicide	Child Abuse	Robbery	Assault	Sexual Assault	Burglary	Theft	Other	
135	Worcester County Sheriff's Office / Worcester County Bureau of Investigation	1	3	1	5	16	8	5	2	41
	Grand Total	364	103	442	360	738	1,094	124	604	3,829

Exhibit 3 – Responses to Data Item 3 by LLEAs

Average Turnaround Time for Crime Scene DNA Evidence Results Calendar Year 2011		
	Local Law Enforcement Agency	Number of Days
1	Aberdeen Police Department	60
2	Allegany County Sheriff's Office	180
3	Anne Arundel County Police Department Crime Laboratory	136
4	Baltimore City Police Department	307
5	Baltimore County Police Department	164
6	Bel Air Police Department	84
7	Calvert County Sheriff's Office	75
8	Cambridge Police Department	165
9	Caroline County Sheriff's Office	60
10	Carroll County Sheriff's Office	116
11	Cecil County Sheriff's Office	136
12	Centreville Police Department	65
13	Charles County Sheriff's Office	65
14	Chestertown Police Department	86
15	City of Annapolis Police Department	90
16	City of Havre de Grace Police Department	92
17	City of Salisbury Police Department	80
18	Crisfield Police Department	120
19	Cumberland Police Department	120
20	Denton Police Department	83
21	Department of State Police (Forensic Science Division)	128
22	Dorchester County Sheriff's Office	40
23	Elkton Police Department	116
24	Frederick County Sheriff's Office	80
25	Frederick Police Department	48
26	Fruitland Police Department	180
27	Gaithersburg Police Department	120
28	Garrett County Sheriff's Office	30
29	Hagerstown Police Department	90
30	Hancock Police Department	60
31	Harford County Sheriff's Office	122
32	Howard County Police Department	24
33	Hurlock Police Department	90
34	Hyattsville City Police Department	90
35	Laurel Police Department	180
36	Maryland Transportation Authority Police	76
37	Montgomery County Police Department	98
38	Ocean City Police Department	107
39	Ocean Pines Police Department	90
40	Office of Queen Anne's County Sheriff	60
41	Prince George's County Police Department	542

Exhibit 3 – Responses to Data Item 3 by LLEAs

Average Turnaround Time for Crime Scene DNA Evidence Results Calendar Year 2011		
	Local Law Enforcement Agency	Number of Days
42	Princess Anne Police Department	88
43	Rising Sun Police Department	90
44	Riverdale Park Police Department	90
45	Somerset County Sheriff's Office	28
46	St. Mary's County Sheriff's Office	112
47	St. Michaels Police Department	200
48	Talbot County Sheriff's Office	30
49	Thurmont Police Department	90
50	Washington County Sheriff's Office	120
51	Westminster Police Department	98
52	Wicomico County Sheriff's Office	107
53	Worcester County Sheriff's Office / Worcester County Bureau of Investigation	120
	Average – All LLEAs Reporting	110

Note:

Only 53 of the 58 LLEAs that reported at least one instance of collecting DNA crime scene evidence during calendar year 2011 provided a specific number in the response to this question. For the remaining 5 LLEAs (City of Takoma Park Police Department, Easton Police Department, Frostburg Police Department, Maryland National Capital Park Police, and University of Maryland Police) either the DNA analyses were not completed in calendar year 2011 (and therefore the cases were reported in Item 4) or the LLEAs did not respond to the question.

Exhibit 4 – Responses to Data Item 4 by LLEAs

Number of Cases with Crime Scene DNA Evidence Submitted to a Lab But Not Analyzed As of December 31, 2011 by LLEA															
	Local Law Enforcement Agency	Month Sample Submitted													Total
		Prior to Jan	Jan	Feb	Mar	Apr	May	June	July	Aug	Sept	Oct	Nov	Dec	
1	Aberdeen Police Department	0	0	0	0	0	0	0	0	0	0	1	0	2	3
2	Allegany County Sheriff's Office	0	0	0	0	0	0	0	0	0	0	0	0	0	0
3	Anne Arundel County Police Department Crime Laboratory	14	1	2	4	3	14	20	28	27	33	35	21	32	234
4	Anne Arundel County Sheriff's Office	0	0	0	0	0	0	0	0	0	0	0	0	0	0
5	Baltimore City Community College Department of Public Safety	0	0	0	0	0	0	0	0	0	0	0	0	0	0
6	Baltimore City Housing Authority Police	0	0	0	0	0	0	0	0	0	0	0	0	0	0
7	Baltimore City Police Department	297	65	41	67	220	227	49	51	59	66	59	67	81	1,349
8	Baltimore City School Police Force	0	0	0	0	0	0	0	0	0	0	0	0	0	0
9	Baltimore City Sheriff's Office	0	0	0	0	0	0	0	0	0	0	0	0	0	0
10	Baltimore County Police Department	19	4	1	7	10	14	9	28	17	21	19	18	12	179
11	Baltimore County Sheriff's Office	0	0	0	0	0	0	0	0	0	0	0	0	0	0
12	Bel Air Police Department	0	0	0	0	0	0	0	0	0	0	0	0	0	0
13	Berlin Police Department	0	0	0	0	0	0	0	0	0	0	0	0	0	0
14	Berwyn Heights Police Department	0	0	0	0	0	0	0	0	0	0	0	0	0	0
15	Bladensburg Police Department	0	0	0	0	0	0	0	0	0	0	0	0	0	0
16	Boonsboro Police Department	0	0	0	0	0	0	0	0	0	0	0	0	0	0
17	Bowie State University Police Department	0	0	0	0	0	0	0	0	0	0	0	0	0	0
18	Brunswick Police Department	0	0	0	0	0	0	0	0	0	0	0	0	0	0
19	Calvert County Sheriff's Office	0	0	0	0	0	0	0	0	3	0	1	1	0	5
20	Cambridge Police Department	0	0	0	0	0	0	0	0	0	1	0	0	0	1
21	Capitol Heights Police Department	0	0	0	0	0	0	0	0	0	0	0	0	0	0

Exhibit 4 – Responses to Data Item 4 by LLEAs

Number of Cases with Crime Scene DNA Evidence Submitted to a Lab But Not Analyzed As of December 31, 2011 by LLEA															
		Month Sample Submitted													
	Local Law Enforcement Agency	Prior to Jan	Jan	Feb	Mar	Apr	May	June	July	Aug	Sept	Oct	Nov	Dec	Total
22	Caroline County Sheriff's Office	0	0	0	0	0	0	0	0	0	0	0	0	0	0
23	Carroll County Sheriff's Office	1	0	0	0	0	0	0	0	0	1	0	0	7	9
24	Cecil County Sheriff's Office	0	0	0	0	0	0	0	0	0	0	0	0	0	0
25	Centreville Police Department	0	0	0	0	0	0	0	0	0	0	0	0	0	0
26	Charles County Sheriff's Office	5	0	0	0	0	0	0	1	1	2	0	0	2	11
27	Chestertown Police Department	0	0	0	0	0	0	0	0	0	0	0	0	0	0
28	Cheverly Police Department	0	0	0	0	0	0	0	0	0	0	0	0	0	0
29	Chevy Chase Village Police Department	0	0	0	0	0	0	0	0	0	0	0	0	0	0
30	City of Annapolis Police Department	0	0	0	0	1	1	0	1	0	0	1	0	0	4
31	City of Bowie Police Department	0	0	0	0	0	0	0	0	0	0	0	0	0	0
32	City of Havre de Grace Police Department	0	0	0	0	0	0	0	0	0	0	0	0	0	0
33	City of Salisbury Police Department	0	0	0	0	0	0	0	0	0	0	0	0	0	0
34	City of Takoma Park Police Department	0	0	0	0	0	0	0	0	0	0	0	0	0	0
35	Colmar Manor Police Department	0	0	0	0	0	0	0	0	0	0	0	0	0	0
36	Coppin State University Department of Public Safety	0	0	0	0	0	0	0	0	0	0	0	0	0	0
37	Cottage City Police Department	0	0	0	0	0	0	0	0	0	0	0	0	0	0
38	Crisfield Police Department	0	0	0	0	0	0	0	0	0	0	0	0	0	0
39	Crofton Police Department	0	0	0	0	0	0	0	0	0	0	0	0	0	0
40	Cumberland Police Department	0	0	0	0	0	0	0	0	0	0	0	0	0	0
41	Delmar Police Department	0	0	0	0	0	0	0	0	0	0	0	0	0	0
42	Denton Police Department	0	0	0	0	0	0	0	0	0	0	0	0	0	0
43	Department of General Services / Maryland Capitol Police	0	0	0	0	0	0	0	0	0	0	0	0	0	0

Exhibit 4 – Responses to Data Item 4 by LLEAs

Number of Cases with Crime Scene DNA Evidence Submitted to a Lab But Not Analyzed As of December 31, 2011 by LLEA															
		Month Sample Submitted													
	Local Law Enforcement Agency	Prior to Jan	Jan	Feb	Mar	Apr	May	June	July	Aug	Sept	Oct	Nov	Dec	Total
44	Department of State Police (Forensic Science Division)	2	1	2	2	2	5	1	6	4	7	11	6	17	66
45	District Heights Police Department	0	0	0	0	0	0	0	0	0	0	0	0	0	0
46	Dorchester County Sheriff's Office	0	0	0	0	0	0	0	0	0	0	0	0	0	0
47	Easton Police Department	0	0	0	0	0	1	0	0	2	0	0	0	1	4
48	Edmonston Police Department	0	0	0	0	0	0	0	0	0	0	0	0	0	0
49	Elkton Police Department	0	0	0	0	0	0	0	0	0	0	0	0	2	2
50	Fairmount Heights Police Department	0	0	0	0	0	0	0	0	0	0	0	0	0	0
51	Federalsburg Police Department	1	0	0	0	0	0	0	0	0	0	0	0	0	1
52	Forest Heights Police Department	0	0	0	0	0	0	0	0	0	0	0	0	0	0
53	Frederick County Sheriff's Office	0	0	0	0	0	0	0	0	0	0	0	0	0	0
54	Frederick Police Department	0	0	0	0	0	1	1	3	0	0	1	0	2	8
55	Frostburg Police Department	0	0	0	0	0	0	0	0	0	0	0	0	0	0
56	Frostburg State University Police Department	0	0	0	0	0	0	0	0	0	0	0	0	0	0
57	Fruitland Police Department	2	0	0	0	0	0	0	0	0	0	0	0	0	2
58	Gaithersburg Police Department	0	0	0	0	0	0	0	0	0	0	0	0	0	0
59	Garrett County Sheriff's Office	0	1	0	0	0	0	0	0	0	0	0	0	0	1
60	Gibson Island Police Department	0	0	0	0	0	0	0	0	0	0	0	0	0	0
61	Glenarden Police Department	0	0	0	0	0	0	0	0	0	0	0	0	0	0
62	Greenbelt Police Department	0	0	0	0	0	0	0	0	0	0	0	0	0	0
63	Greensboro Police Department	0	0	0	0	0	0	0	0	0	0	0	0	0	0
64	Hagerstown Community College Police Department	0	0	0	0	0	0	0	0	0	0	0	0	0	0
65	Hagerstown Police Department	0	0	0	1	0	0	0	0	0	1	0	1	2	5
66	Hampstead Police Department	0	0	0	0	0	0	0	0	0	0	0	0	0	0

Exhibit 4 – Responses to Data Item 4 by LLEAs

Number of Cases with Crime Scene DNA Evidence Submitted to a Lab But Not Analyzed As of December 31, 2011 by LLEA															
		Month Sample Submitted													
	Local Law Enforcement Agency	Prior to Jan	Jan	Feb	Mar	Apr	May	June	July	Aug	Sept	Oct	Nov	Dec	Total
67	Hancock Police Department	1	0	0	0	0	0	0	0	0	0	0	0	0	1
68	Harford County Sheriff's Office	0	0	0	0	0	0	0	0	1	3	3	1	4	12
69	Howard County Police Department	0	0	0	0	0	0	0	0	0	0	0	0	1	1
70	Howard County Sheriff's Office	0	0	0	0	0	0	0	0	0	0	0	0	0	0
71	Hurlock Police Department	0	0	1	1	2	1	0	3	0	0	0	0	0	8
72	Hyattsville City Police Department	0	0	0	0	0	0	0	0	0	0	0	0	0	0
73	Kent County Sheriff's Office	0	0	0	0	0	0	0	0	0	0	0	0	0	0
74	La Plata Police Department	0	0	0	0	0	0	0	0	0	0	0	0	0	0
75	Landover Hills Police Department	0	0	0	0	0	0	0	0	0	0	0	0	0	0
76	Laurel Police Department	0	0	0	0	0	0	0	0	0	0	0	0	0	0
77	Lonaconing Police Department	0	0	0	0	0	0	0	0	0	0	0	0	0	0
78	Luke Police Department	0	0	0	0	0	0	0	0	0	0	0	0	0	0
79	Manchester Police Department	0	0	0	0	0	0	0	0	0	0	0	0	0	0
80	Maryland Natural Resources Police	0	0	0	0	0	0	0	0	0	0	0	0	0	0
81	Maryland Park Police Montgomery County Division	0	0	0	0	0	0	0	0	0	0	0	0	0	0
82	Maryland Transportation Authority Police	12	0	0	1	0	0	0	0	1	0	0	0	0	14
83	Maryland-National Capital Park Police- Prince George's Division	1	0	0	0	0	0	0	2	0	0	0	0	0	3
84	Maryland Department of Public Safety and Correctional Services - Internal Investigative Unit	0	0	0	0	0	0	0	0	0	0	0	0	0	0
85	Montgomery County Police Department	0	1	0	1	0	0	1	3	1	3	6	14	25	55
86	Montgomery County Sheriff's Office	0	0	0	0	0	0	0	0	0	0	0	0	0	0

Exhibit 4 – Responses to Data Item 4 by LLEAs

Number of Cases with Crime Scene DNA Evidence Submitted to a Lab But Not Analyzed As of December 31, 2011 by LLEA															
		Month Sample Submitted													
	Local Law Enforcement Agency	Prior to Jan	Jan	Feb	Mar	Apr	May	June	July	Aug	Sept	Oct	Nov	Dec	Total
87	Morgan State University Department of Police and Public Safety	0	0	0	0	0	0	0	0	0	0	0	0	0	0
88	Mount Rainier Police Department	0	0	0	0	0	0	0	0	0	0	0	0	0	0
89	New Carrollton Police Department	0	0	0	0	0	0	0	0	0	0	0	0	0	0
90	North East Police Department	0	0	0	0	0	0	0	0	0	0	0	0	0	0
91	Oakland Police Department	0	0	0	0	0	0	0	0	0	0	0	0	0	0
92	Ocean City Police Department	0	0	0	0	0	0	0	0	1	2	0	1	0	4
93	Ocean Pines Police Department	0	0	0	0	0	0	0	0	0	0	0	0	0	0
94	Office of the Queen Anne's County Sheriff	0	0	0	0	0	0	0	0	0	0	0	0	0	0
95	Oxford Police Department	0	0	0	0	0	0	0	0	0	0	0	0	0	0
96	Perryville Police Department	0	0	0	0	0	0	0	0	0	0	0	0	0	0
97	Pocomoke City Police Department	0	0	0	0	0	0	0	0	0	0	0	0	0	0
98	Port Deposit Police Department	0	0	0	0	0	0	0	0	0	0	0	0	0	0
99	Prince George's Community College Campus Police	0	0	0	0	0	0	0	0	0	0	0	0	0	0
100	Prince George's County Police Department	561	61	33	63	42	48	70	71	73	81	56	40	45	1,244
101	Prince George's Sheriff's Office	0	0	0	0	0	0	0	0	0	0	0	0	0	0
102	Princess Anne Police Department	0	0	0	0	0	0	0	0	0	0	0	1	0	1
103	Ridgely Police Department	0	0	0	0	0	0	0	0	0	0	0	0	0	0
104	Rising Sun Police Department	0	0	0	0	0	0	1	0	0	0	0	1	0	2
105	Riverdale Park Police Department	1	0	0	0	0	0	0	0	0	0	0	0	0	1
106	Rock Hall Police Department	0	0	0	0	0	0	0	0	0	0	0	0	0	0
107	Rockville City Police Department	0	0	0	0	0	0	0	0	0	0	0	0	0	0
108	Salisbury University Police Department	0	0	0	0	0	0	0	0	0	0	0	0	0	0

Exhibit 4 – Responses to Data Item 4 by LLEAs

Number of Cases with Crime Scene DNA Evidence Submitted to a Lab But Not Analyzed As of December 31, 2011 by LLEA															
		Month Sample Submitted													
	Local Law Enforcement Agency	Prior to Jan	Jan	Feb	Mar	Apr	May	June	July	Aug	Sept	Oct	Nov	Dec	Total
109	Seat Pleasant Police Department	0	0	0	0	0	0	0	0	0	0	0	0	0	0
110	Smithsburg Police Department	0	0	0	0	0	0	0	0	0	0	0	0	0	0
111	Snow Hill Police Department	0	0	0	0	0	0	0	0	0	0	0	0	0	0
112	Somerset County Sheriff's Office	0	0	0	0	0	0	0	0	0	0	0	0	0	0
113	Spring Grove Hospital Center Police Department	0	0	0	0	0	0	0	0	0	0	0	0	0	0
114	St. Mary's County Sheriff's Office	0	0	0	0	0	0	0	0	0	0	0	0	0	0
115	St. Michaels Police Department	2	0	0	0	0	0	0	0	0	0	0	0	0	2
116	Sykesville Police Department	0	0	0	0	0	0	0	0	0	0	0	0	0	0
117	Talbot County Sheriff's Office	0	0	0	0	0	0	0	0	0	0	0	0	0	0
118	Taneytown Police Department	0	0	0	0	0	0	0	0	0	0	0	0	0	0
119	Thurmont Police Department	0	0	0	0	0	0	0	0	0	0	1	0	0	1
120	Town of Morningside Police Department	0	0	0	0	0	0	0	0	0	0	0	0	0	0
121	Towson University Police	0	0	0	0	0	0	0	0	0	0	0	0	0	0
122	Trappe Police Department	0	0	0	0	0	0	0	0	0	0	0	0	0	0
123	University of Baltimore Police Department	0	0	0	0	0	0	0	0	0	0	0	0	0	0
124	University of Maryland Baltimore County Police	0	0	0	0	0	0	0	0	0	0	0	0	0	0
125	University of Maryland Baltimore Police Force	0	0	0	0	0	0	0	0	0	0	0	0	0	0
126	University of Maryland Eastern Shore Police Department	0	0	0	0	0	0	0	0	0	0	0	0	0	0
127	University of Maryland Police	0	0	0	0	0	0	0	0	0	0	1	0	0	1
128	University Park Police Department	0	0	0	0	0	0	0	0	0	0	0	0	0	0
129	Upper Marlboro Police Department	0	0	0	0	0	0	0	0	0	0	0	0	0	0

Exhibit 4 – Responses to Data Item 4 by LLEAs

Number of Cases with Crime Scene DNA Evidence Submitted to a Lab But Not Analyzed As of December 31, 2011 by LLEA															
		Month Sample Submitted													
	Local Law Enforcement Agency	Prior to Jan	Jan	Feb	Mar	Apr	May	June	July	Aug	Sept	Oct	Nov	Dec	Total
130	Washington County Sheriff's Office	0	0	0	0	0	0	0	0	0	0	0	0	0	0
131	Washington Suburban Sanitary Commission Police Department	0	0	0	0	0	0	0	0	0	0	0	0	0	0
132	Westminster Police Department	0	0	0	0	0	0	0	0	0	0	0	0	1	1
133	Wicomico County Sheriff's Office	0	0	0	0	0	0	0	0	0	0	0	0	0	0
134	Worcester County Bureau of Investigation	0	0	0	0	0	0	0	0	0	0	0	0	0	0
135	Worcester County Sheriff's Office / Worcester County Bureau of Investigation	0	0	0	0	0	0	1	0	1	0	0	0	2	4
	Total	919	134	80	147	280	312	153	197	191	221	195	172	238	3,239

Exhibit 5 DNA Reporting Form



STATE OF MARYLAND LAW ENFORCEMENT DNA EVIDENCE SURVEY



In accordance with Maryland Annotated Code, Public Safety Article, section 2-514, law enforcement agencies in Maryland must submit a report related to DNA crime scene evidence collection and analysis to the Governor's Office of Crime Control and Prevention (GOCCP) which will then, in turn, compile the individual reports and submit one summary report to the Department of Legislative Audits. These reports are only necessary every other year.

The timeline for this year's report will be as follows:

January 31, 2012 - Local law enforcement to complete the following survey reporting data from January 1, 2011 through December 31, 2011 and submitting to GOCCP.

April 1, 2012 - GOCCP to submit data and compiled report to the Department of Legislative Audits for their review and analysis.

Subsequently, The Department of Legislative Audits will submit the GOCCP report with their comments to the Maryland General Assembly.

This process will be repeated in every even-numbered year. GOCCP will provide frequent reminders to local law enforcement regarding upcoming deadlines. Like other legal reporting requirements, agencies that do not comply with this reporting mandate will not be eligible to receive state grant funds from GOCCP.

Please maintain copies of the records that you use as the basis for the information reported in this survey document since the reported data is subject to review and verification by the Maryland Office of Legislative Audits.

Please submit your completed survey no later than January 31, 2012 to:

Governor's Office of Crime Control and Prevention
Attn: Virginia Geckler
300 E. Joppa Rd. Suite 1105
Baltimore, MD 21286

Any questions regarding this survey should be directed to Virginia Geckler at 410-821-2848. Thank you for your cooperation.

**Exhibit 5
DNA Reporting Form**

**2011 DNA SURVEY
PAGE 1/2**

Name of Agency:

Address:

Main Telephone: _____

Fax: _____

Name for Agency Official completing report:

**Direct Contact phone
number:** _____

E-mail: _____

Exhibit 5 DNA Reporting Form

Definitions

- 1) DNA crime scene evidence sample is a case that includes one or more DNA crime scene DNA evidence items.
- 2) A DNA crime scene evidence item includes one or more of the following:
 - a. Physical evidence (e.g., a sweat shirt, glove, or cigarette retrieved from the crime scene **and** submitted to a crime lab for biological analysis);
 - b. A "rape kit";
 - c. Swabs from suspects or voluntarily provided swab samples.
- 3) **IMPORTANT:** The reported data should reflect the number of cases in which crime scene DNA evidence was collected and submitted to a lab for biological analysis. Do not report a count of individual items.
- 4) Biological analysis is a submission of a DNA crime scene evidence item to a laboratory for analysis including serology testing.
- 5) Collected and submitted to a crime laboratory for biological analysis is:
 - a. The date a DNA crime scene evidence item is sent from the police department's evidence holding area to a lab regardless of:
 1. the current phase of laboratory analysis (serology vs. advanced testing)
 2. whether or not the evidence was probative to the case
 3. This should include all evidence items, including those outsourced to private labs or labs operated by other jurisdictions.
 4. This should include those items submitted even when a subsequent determination that no testing was required and the case was closed without performing serology or advanced testing.
 5. This should include cases where serology testing determined that further DNA analysis was either not possible (e.g., due to a lack of materials to test) or warranted.
- 6) **IMPORTANT:** Reported information shall include all cases in which crime scene DNA evidence items were submitted to a lab regardless of whether the items were submitted to a government or private lab for analysis

**Exhibit 5
DNA Reporting Form**

--- SURVEY Start ---

- 1. Check off the corresponding box for each crime category in which DNA crime scene evidence items are routinely collected and submitted to a crime laboratory for biological analysis.**

_____Homicide	_____Child Abuse	_____Robbery
_____Assault	_____Sexual Assault	_____Burglary
_____Theft	_____Other	

- 2. Indicate the number of cases in which DNA crime scene evidence samples were collected and submitted to a crime laboratory for biological analysis from January 1, 2011 through December 31, 2011. Provide the number of cases that included evidence samples collected and submitted for each crime category.**

_____Homicide	_____Child Abuse	_____Robbery
_____Assault	_____Sexual Assault	_____Burglary
_____Theft	_____Other	

- 3. What was the average time between the date the agency submitted cases with DNA crime scene evidence sample(s) for biological analysis and the date it received the DNA analysis results back from the crime laboratory?**

To calculate this, use DNA crime scene evidence samples that have completed DNA analysis in CY 2011 **regardless** of when they were submitted to the lab for analysis. Determine the number of days from the original biological analysis submission date to the date the DNA analysis results were returned to you. Total the number of days and divide by the number of cases submitted to determine the average. Please report the result in number of days as a single value (that is, do not give a range). Do not include cases in which the only action was to perform a match between already processed crime scene DNA evidence samples and other DNA databases (such as Federal CODIS).

Average Number of Days _____

**Exhibit 5
DNA Reporting Form**

4. Identify the number of cases in which DNA crime scene evidence samples were submitted for biological analysis prior to and including 2011, (by month of submission) for which a final DNA analysis report has not been received from the lab, as of 12/31/2011.

This number will reflect the cases where DNA crime scene evidence samples that you submitted to a laboratory for biological analysis in which you have not yet received the results of the analysis. The purpose of this question is to determine if there is a case backlog of DNA crime scene evidence sample analysis in Maryland, and if so, the size of such backlog. (Note that this represents samples pending analysis as a snap shot at the reporting date and will not be reflective of all casework handled by the police department and related lab.)

Prior to 1/1/11 _____	April 2011 _____	Aug 2011 _____	Nov 2011 _____
Jan 2011 _____	May 2011 _____	Sept 2011 _____	Dec 2011 _____
Feb 2011 _____	June 2011 _____	Oct 2011 _____	
March 2011 _____	July 2011 _____		

Please submit your completed survey no later than January 31, 2012 to:

Governor's Office of Crime Control and Prevention
Attn: Virginia Geckler
300 E. Joppa Rd. Suite 1105
Baltimore, MD 21286

Exhibit 6

Sexual Assault Forensic Exam Reimbursements Paid to Hospitals Performing Sexual Assault Forensic Examinations Calendar Year 2011	
Hospital	Reimbursements Paid to Hospitals
Anne Arundel Medical Center	6
Atlantic General Hospital	27
Baltimore Washington Medical Center	101
Calvert Memorial Hospital	8
Carroll County General Hospital	26
Civista Medical Center	30
Dorchester General Hospital	2
Franklin Square Hospital	27
Frederick Memorial Hospital	56
Garrett County Memorial Hospital	3
Greater Baltimore Medical Center	127
Harford Memorial Hospital	5
Howard County General Hospital	65
Memorial Hospital at Easton	39
Mercy Medical Center	387
Peninsula Regional Medical Center	53
Prince George's Hospital Center	150
St. Mary's Hospital	13
Shady Grove Hospital	92
Union Hospital of Cecil County	23
University of Maryland Medical System	52
Upper Chesapeake Medical Center	8
Washington County Hospital Association	37
Western Maryland Health System ¹	32
Total	1,369

¹ Formerly Memorial Hospital at Cumberland

Exhibit 6

Sexual Assault Forensic Exam Reimbursements by Subdivision Where the Assault Was Committed Calendar Year 2011	
Subdivision	Total Reimbursements
Allegany	26
Anne Arundel	109
Baltimore City	438
Baltimore	141
Calvert	7
Caroline	5
Carroll	26
Cecil	22
Charles	28
Dorchester	8
Frederick	52
Garrett	7
Harford	31
Howard	50
Kent	2
Montgomery	91
Prince George's	158
Queen Anne's	7
St. Mary's	13
Somerset	14
Talbot	19
Washington	40
Wicomico	32
Worcester	33
Unknown	10
Total	1,369

REVIEW TEAM

Edward L. Shulder, CPA
Audit Manager

David R. Fahnestock
Senior Auditor

Nicholas J. Caronna, CPA
Ryan P. Stecher
Staff Auditors